



DEVELOPMENT PERMIT NO. DP000969

BROAD COMMERCIAL MANAGEMENT INC
Name of Owner(s) of Land (Permittee)

2214 MCCULLOUGH ROAD
Civic Address

1. This development permit is issued subject to compliance with all of the bylaws of the municipality applicable thereto, except as specifically varied or supplemented by this permit.
2. This development permit applies to and only to those lands within the municipality described below, and any and all building structures and other developments thereon:

Legal Description:

LOT A, SECTION 18, RANGE 8, MOUNTAIN DISTRICT, PLAN VIP86028

PID No. 027-755-215

3. The land described herein shall be developed strictly in accordance with the following terms and conditions and provisions of this permit and any plans and specifications hereto which shall form a part thereof.

Schedule A LOCATION PLAN
Schedule B SITE PLAN
Schedule C BUILDING ELEVATIONS
Schedule D LANDSCAPE PLAN
Schedule E BUILDING RENDERING

- a) If the applicant does not substantially commence the development permitted by this permit within two years of the date of this permit, the permit shall lapse.
- 4. This permit is not a building permit nor does it constitute approval of any signage. Separate applications must be made for a building permit and sign permit.

REVIEWED AND APPROVED ON

2016-JAN-6
Date

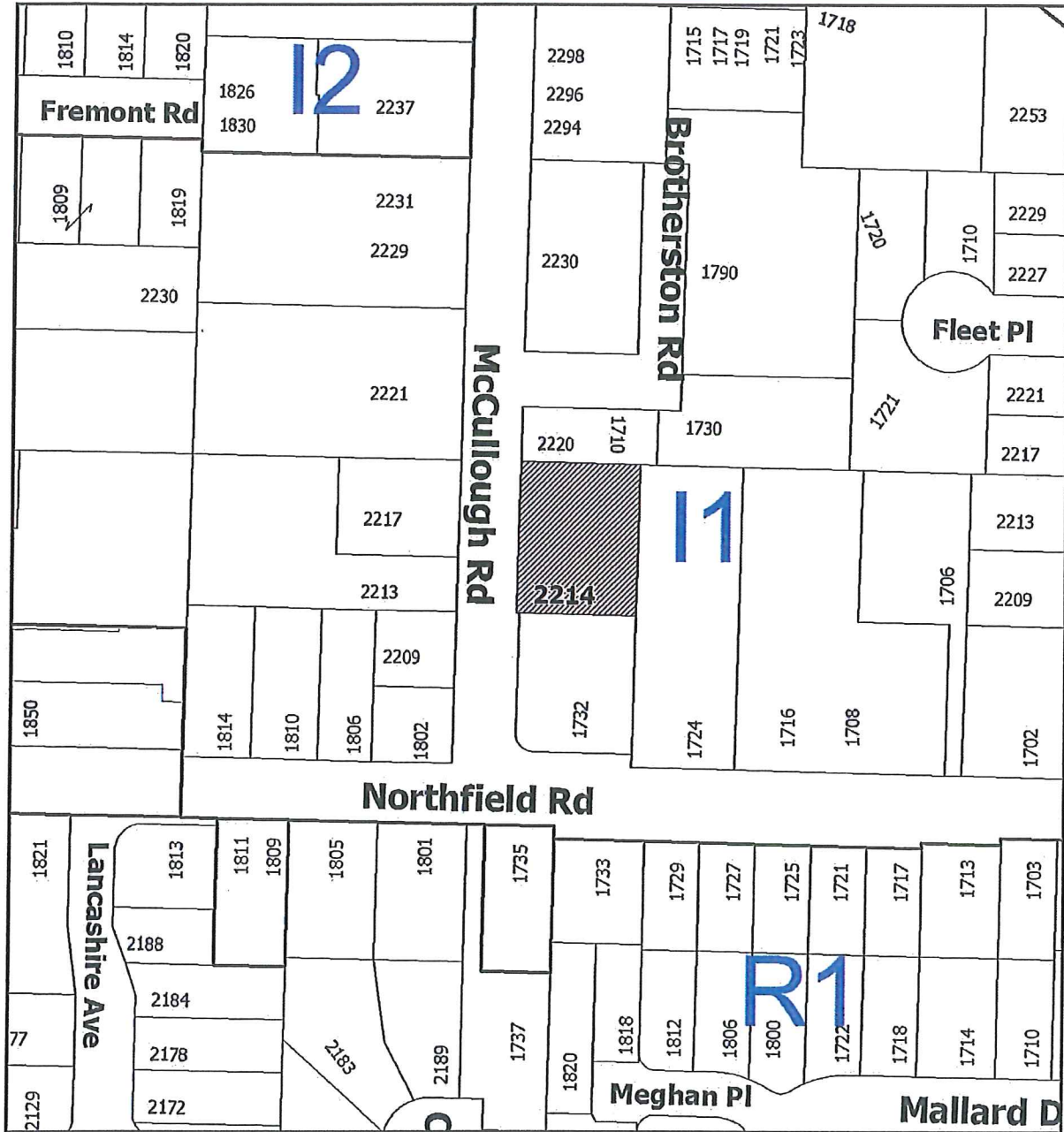
[Signature]
D. Lindsay
Director
Community Development
Pursuant to Section 154 (1)(b) of the Community Charter

GN/sm
Prospero attachment: DP000969

Development Permit DP000969
2214 McCullough Road

Schedule A

LOCATION PLAN



DEVELOPMENT PERMIT NO. DP000969

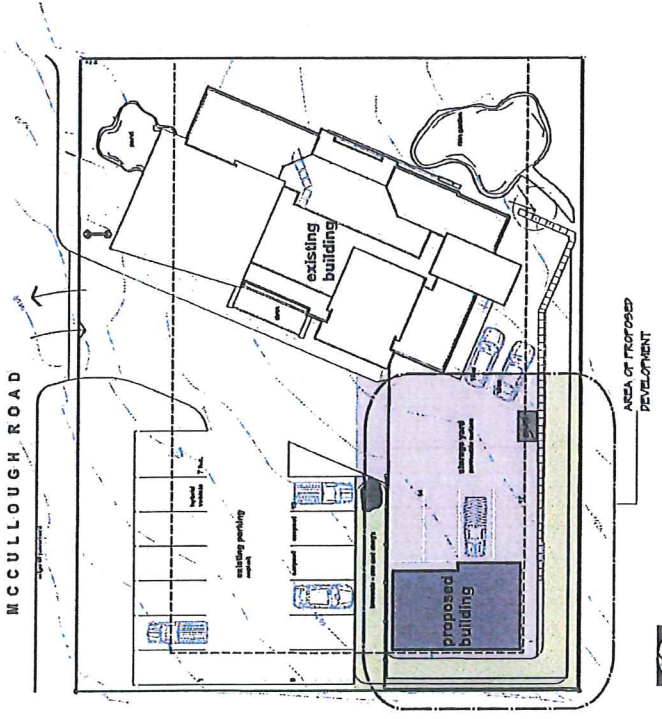
LOCATION PLAN

Civic: 2214 McCullough Road
Lot A, Section 18, Range 8,
Mountain District, Plan VIP86028



Subject
Property

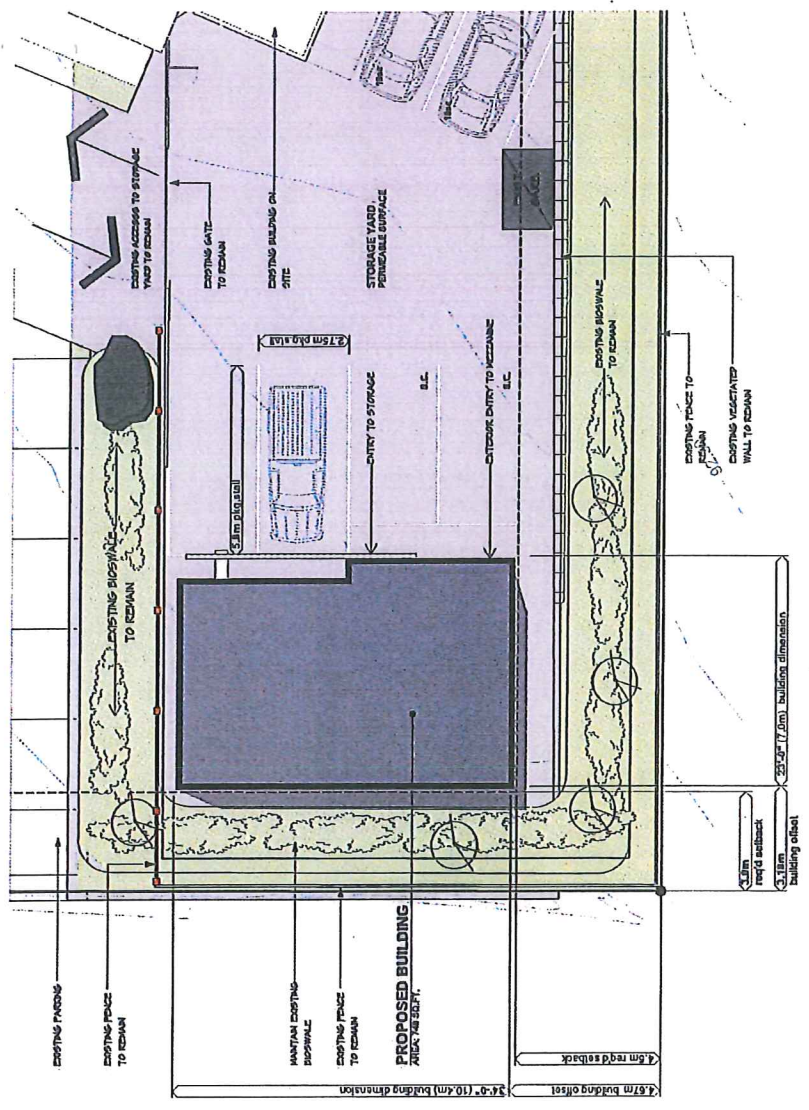




SITE PLAN
scale: 1:250 metric



AERIAL
scale: NTS



SITE PLAN
scale: 1/8" = 1'-0" metric

PROJECT DATA:

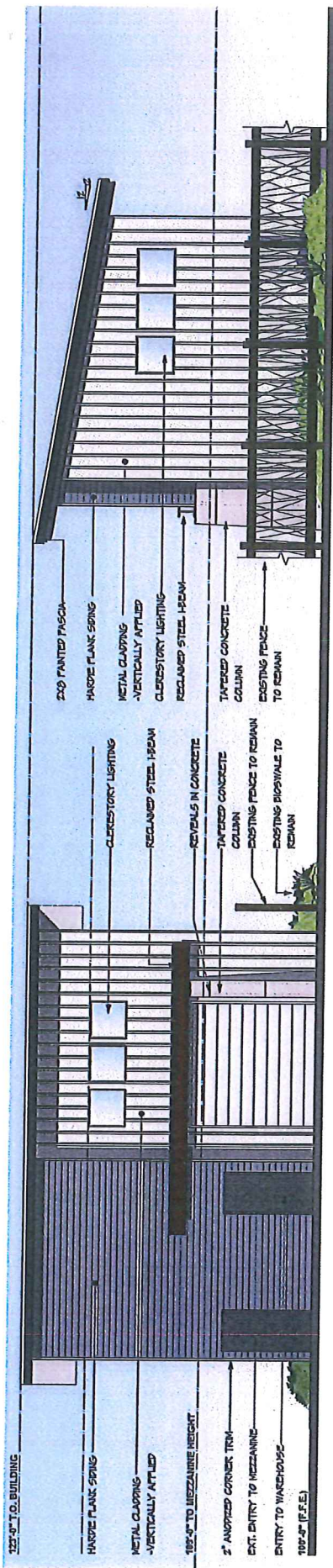
Legal Description:	Lot 10, Range 1, Township District, Plan YR00023	Warehouse Building Area:	143 sq. ft. (13.2 sq. m)
City Address:	2214 McCullough Road	Storage:	200 sq. ft. (18.6 sq. m)
Zoning:	I-1 - Highway Industrial	Let Coverage (max 40%):	15.7%
Lot Area:	11,100 sq. ft. (1,022 sq. m)	Net Coverage:	3.1%
Lot Area:	11,100 sq. ft. (1,022 sq. m)	Net Coverage:	28.2%
Building Footprint:	100' x 150' ± (15,000 sq. ft. / 1,393 sq. m)	Parking Requirement:	Storage: 1012 sq. ft. (93.7 sq. m) @ 1:100
Building Footprint:	100' x 150' ± (15,000 sq. ft. / 1,393 sq. m)	Parking Provision:	Storage: 14
Storage:	200 sq. ft. (18.6 sq. m)	Parking Provision:	Storage: 5
		Parking Provision:	Storage: 19

Development Permit DP000969
2214 McCullough Road

Schedule B
SITE PLAN

ICWD PROPOSED STORAGE WAREHOUSE
2214 McCullough Rd.
NANAIMO, B.C.
DRAWING #

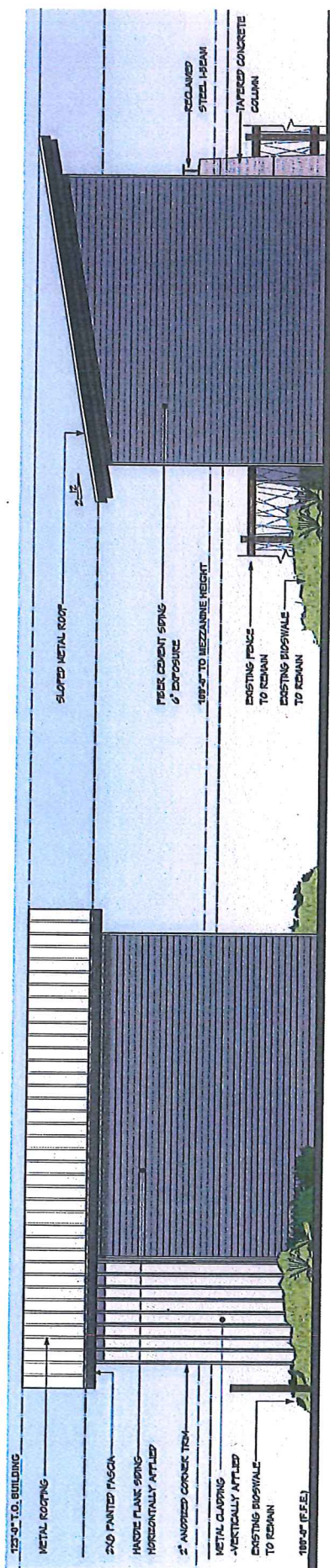
PR1



NORTH ELEVATION

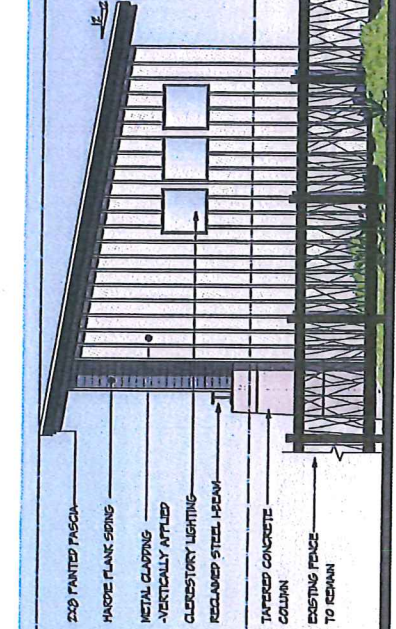
SCALE: 3/16" = 1'-0"

NOTE:



SOUTH ELEVATION

SCALE: 3/16" = 1'-0"



WEST ELEVATION

SCALE: 3/16" = 1'-0"

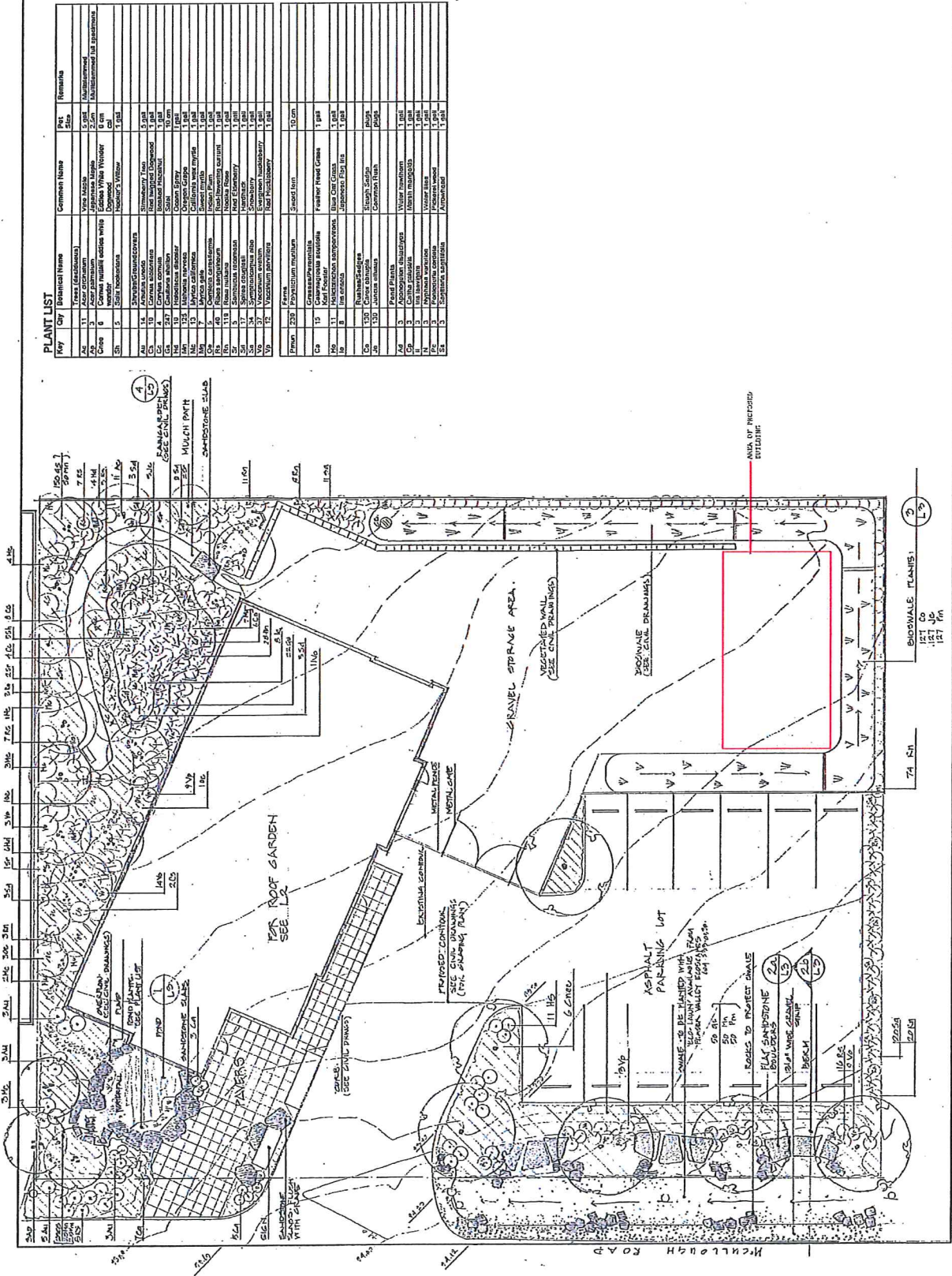


EAST ELEVATION

SCALE: 3/16" = 1'-0"

Development Permit DP000969
 2214 McCullough Road

Schedule D
 LANDSCAPE PLAN



PLANT LIST

Key	Botanical Name	Common Name	Plant Size	Remarks
1	Trees (deciduous)			
2	Acacia saligna	Wattle	5.0m	Subliminal
3	Canola	Canola	2.0m	Subliminal
4	Canola	Canola	0.5m	Subliminal
5	Canola	Canola	0.5m	Subliminal
6	Canola	Canola	0.5m	Subliminal
7	Canola	Canola	0.5m	Subliminal
8	Canola	Canola	0.5m	Subliminal
9	Canola	Canola	0.5m	Subliminal
10	Canola	Canola	0.5m	Subliminal
11	Canola	Canola	0.5m	Subliminal
12	Canola	Canola	0.5m	Subliminal
13	Canola	Canola	0.5m	Subliminal
14	Canola	Canola	0.5m	Subliminal
15	Canola	Canola	0.5m	Subliminal
16	Canola	Canola	0.5m	Subliminal
17	Canola	Canola	0.5m	Subliminal
18	Canola	Canola	0.5m	Subliminal
19	Canola	Canola	0.5m	Subliminal
20	Canola	Canola	0.5m	Subliminal
21	Canola	Canola	0.5m	Subliminal
22	Canola	Canola	0.5m	Subliminal
23	Canola	Canola	0.5m	Subliminal
24	Canola	Canola	0.5m	Subliminal
25	Canola	Canola	0.5m	Subliminal
26	Canola	Canola	0.5m	Subliminal
27	Canola	Canola	0.5m	Subliminal
28	Canola	Canola	0.5m	Subliminal
29	Canola	Canola	0.5m	Subliminal
30	Canola	Canola	0.5m	Subliminal
31	Canola	Canola	0.5m	Subliminal
32	Canola	Canola	0.5m	Subliminal
33	Canola	Canola	0.5m	Subliminal
34	Canola	Canola	0.5m	Subliminal
35	Canola	Canola	0.5m	Subliminal
36	Canola	Canola	0.5m	Subliminal
37	Canola	Canola	0.5m	Subliminal
38	Canola	Canola	0.5m	Subliminal
39	Canola	Canola	0.5m	Subliminal
40	Canola	Canola	0.5m	Subliminal
41	Canola	Canola	0.5m	Subliminal
42	Canola	Canola	0.5m	Subliminal
43	Canola	Canola	0.5m	Subliminal
44	Canola	Canola	0.5m	Subliminal
45	Canola	Canola	0.5m	Subliminal
46	Canola	Canola	0.5m	Subliminal
47	Canola	Canola	0.5m	Subliminal
48	Canola	Canola	0.5m	Subliminal
49	Canola	Canola	0.5m	Subliminal
50	Canola	Canola	0.5m	Subliminal
51	Canola	Canola	0.5m	Subliminal
52	Canola	Canola	0.5m	Subliminal
53	Canola	Canola	0.5m	Subliminal
54	Canola	Canola	0.5m	Subliminal
55	Canola	Canola	0.5m	Subliminal
56	Canola	Canola	0.5m	Subliminal
57	Canola	Canola	0.5m	Subliminal
58	Canola	Canola	0.5m	Subliminal
59	Canola	Canola	0.5m	Subliminal
60	Canola	Canola	0.5m	Subliminal
61	Canola	Canola	0.5m	Subliminal
62	Canola	Canola	0.5m	Subliminal
63	Canola	Canola	0.5m	Subliminal
64	Canola	Canola	0.5m	Subliminal
65	Canola	Canola	0.5m	Subliminal
66	Canola	Canola	0.5m	Subliminal
67	Canola	Canola	0.5m	Subliminal
68	Canola	Canola	0.5m	Subliminal
69	Canola	Canola	0.5m	Subliminal
70	Canola	Canola	0.5m	Subliminal
71	Canola	Canola	0.5m	Subliminal
72	Canola	Canola	0.5m	Subliminal
73	Canola	Canola	0.5m	Subliminal
74	Canola	Canola	0.5m	Subliminal
75	Canola	Canola	0.5m	Subliminal
76	Canola	Canola	0.5m	Subliminal
77	Canola	Canola	0.5m	Subliminal
78	Canola	Canola	0.5m	Subliminal
79	Canola	Canola	0.5m	Subliminal
80	Canola	Canola	0.5m	Subliminal
81	Canola	Canola	0.5m	Subliminal
82	Canola	Canola	0.5m	Subliminal
83	Canola	Canola	0.5m	Subliminal
84	Canola	Canola	0.5m	Subliminal
85	Canola	Canola	0.5m	Subliminal
86	Canola	Canola	0.5m	Subliminal
87	Canola	Canola	0.5m	Subliminal
88	Canola	Canola	0.5m	Subliminal
89	Canola	Canola	0.5m	Subliminal
90	Canola	Canola	0.5m	Subliminal
91	Canola	Canola	0.5m	Subliminal
92	Canola	Canola	0.5m	Subliminal
93	Canola	Canola	0.5m	Subliminal
94	Canola	Canola	0.5m	Subliminal
95	Canola	Canola	0.5m	Subliminal
96	Canola	Canola	0.5m	Subliminal
97	Canola	Canola	0.5m	Subliminal
98	Canola	Canola	0.5m	Subliminal
99	Canola	Canola	0.5m	Subliminal
100	Canola	Canola	0.5m	Subliminal

PROJECT NUMBER: INC-D-295
 SCALE: 1/8" = 1'-0"
 DATE: 04/21/08
 DRAWN BY: VID
 CHECKED: [Signature]
 PROJECT NAME: [Project Name]
 DRAWING NUMBER: [Drawing Number]

CONSULTANT: [Firm Name]
 PROJECT: [Project Name]
 ADDRESS: [Address]
 PHONE: [Phone Number]
 FAX: [Fax Number]
 EMAIL: [Email Address]

PROJECT TITLE: LANDSCAPE PLAN
 SHEET TITLE: [Sheet Title]

PROJECT NUMBER: INC-D-295
 SCALE: 1/8" = 1'-0"
 DATE: 04/21/08
 DRAWN BY: VID
 CHECKED: [Signature]

PROJECT NAME: [Project Name]
 DRAWING NUMBER: [Drawing Number]

CONSULTANT: [Firm Name]
 PROJECT: [Project Name]
 ADDRESS: [Address]
 PHONE: [Phone Number]
 FAX: [Fax Number]
 EMAIL: [Email Address]

PROJECT TITLE: LANDSCAPE PLAN
 SHEET TITLE: [Sheet Title]

PROJECT NUMBER: INC-D-295
 SCALE: 1/8" = 1'-0"
 DATE: 04/21/08
 DRAWN BY: VID
 CHECKED: [Signature]

PROJECT NAME: [Project Name]
 DRAWING NUMBER: [Drawing Number]

Development Permit DP000969
2214 McCullough Road

Schedule E

BUILDING RENDERING



1000 West Broadway, Suite 100
Vancouver, BC V6H 2G6
Tel: 604.681.1111 Fax: 604.681.1112
www.delinea.com

PROJECT # dt392-34-15
ISSUED: 30 NOV 2015

IWCD PROPOSED STORAGE WAREHOUSE

2214 McCullough Rd.
NANAIMO, B.C.
DRAWING#

PR4